

DEPOSITED PLAN

16128/1

TITLE INFORMATION

AMENDS N/A

X PLAN X22818

PLAN OF

BLOCKS 1-15 SECTION 73
 BLOCKS 1-23 SECTION 74
 BLOCKS 1-31 SECTION 75
 BLOCKS 1-9 SECTION 76
 BLOCKS 1-9 SECTION 77
 BLOCKS 1-14 SECTION 78
 BLOCKS 1-20 SECTION 79

DIVISION : WHITLAM

DISTRICT : MOLONGLO VALLEY

AUSTRALIAN CAPITAL TERRITORY

SCALE 1 : 1500



I, Matthew Dean Stevenson of Lonergan Surveying Pty Ltd a surveyor registered under the Surveyors Act 2007 hereby certify that the survey represented on this plan is accurate and has been made in accordance with the Surveyors Practice Directions and was completed on 06/11/2023

SURVEYORS REFERENCE 22202.3B1

Date 19/12/23

I certify that this plan has been examined in accordance with the Districts Act 2002

for
 Surveyor-General of the ACT

20/12/2023

Date

LEGEND AND NOTES

Subject Boundary _____
 Adjoining Boundary _____
 Easement - - - - -

(S&D) PROPOSED SEWERAGE AND DRAINAGE SERVICE EASEMENT 3.5 WIDE

(S&D*) PROPOSED SEWERAGE AND DRAINAGE EASEMENT 3.5 WIDE

All Easements are 2.5 metres wide (except as otherwise shown)

Deposited in the office of the Registrar of Titles at Canberra

In the Australian Capital Territory at

9:02 am, 03/01/2024

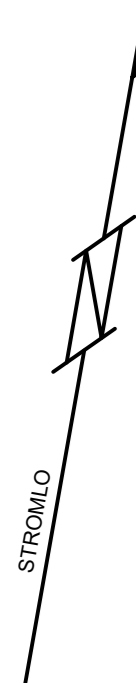
Approved

David Pryce
 Registrar-General



Registrar of Titles

SHORT LINE TABLE				
LINE	BEARING	DISTANCE	ARC	RADIUS
1	121°48' 10"	3.19	3.19	250.35
2	120°53' 10"	4.815	4.815	250.35
3	119°44' 20"	5.215	5.215	250.35
4	118°32' 20"	5.275	5.275	250.35

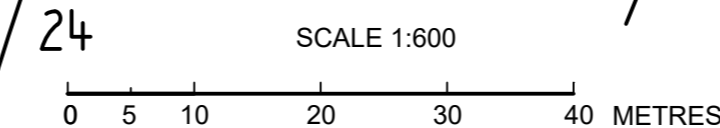


SEE SHEET 4
APUATIMI CRESCENT
73

SEE SHEET 4

SEE SHEET 4

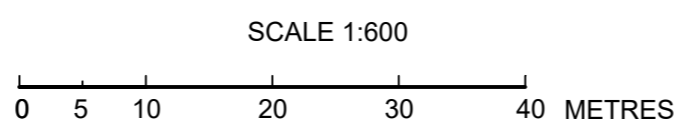
SEE SHEET 3

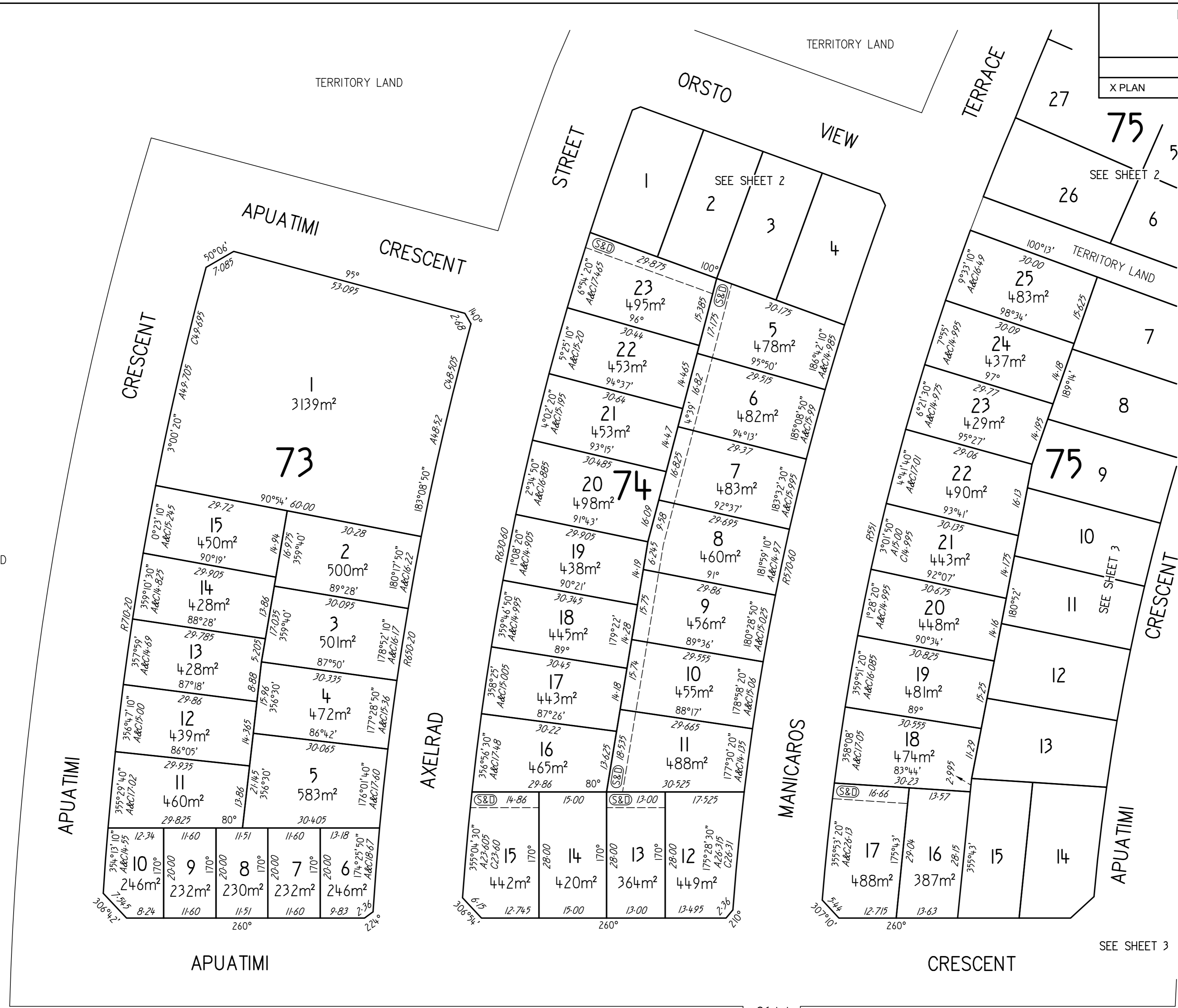
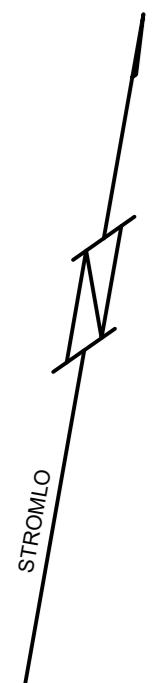


LINE	BEARING	DISTANCE	ARC	RADIUS
5	117°05'50"	7.325	7.325	250.35
6	115°25'40"	7.26	7.26	250.35
7	113°46'20"	7.205	7.21	250.35
8	112°07'40"	7.16	7.16	250.35
9	109°51'10"	12.72	12.72	250.35



SEE SHEET 4

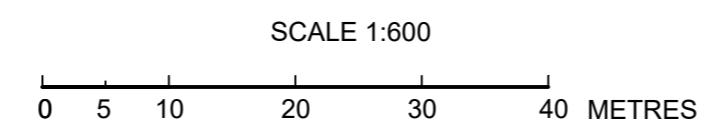




TERRITORY LAND

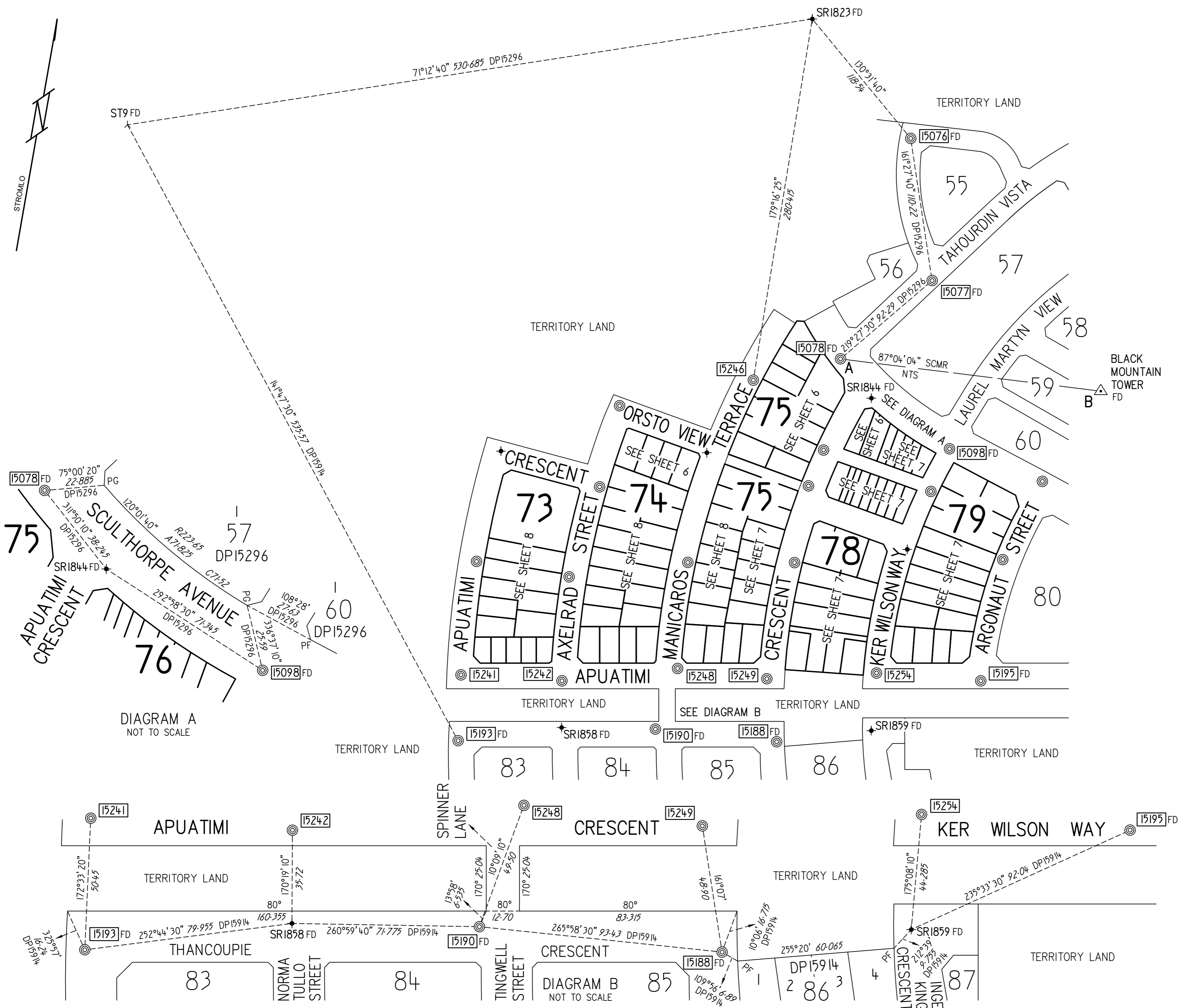
TERRITORY LAND

TERRITORY LAND



SPINNER LANE

SEE SHEET 3



DEPOSITED PLAN

16128/5

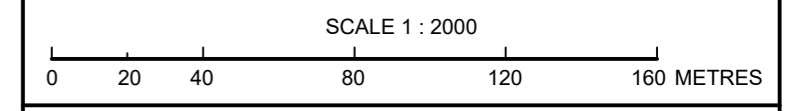
SURVEY INFORMATION

AMENDS N/A
X PLAN X22818

PLAN OF

BLOCKS 1-15 SECTION 73
BLOCKS 1-23 SECTION 74
BLOCKS 1-31 SECTION 75
BLOCKS 1-9 SECTION 76
BLOCKS 1-9 SECTION 77
BLOCKS 1-14 SECTION 78
BLOCKS 1-20 SECTION 79

DIVISION : WHITLAM
DISTRICT : MOLONGLO VALLEY
AUSTRALIAN CAPITAL TERRITORY



I, Matthew Dean Stevenson of Lonergan Surveying Pty Ltd a surveyor registered under the Surveyors Act 2007 hereby certify that the survey represented on this plan is accurate and has been made in accordance with the Surveyors Practice Directions and was completed on 06/11/2023

[Signature]
SURVEYORS REFERENCE 22202.3B1 Date 19/12/23

I certify that this plan has been examined in accordance with the Surveyors Practice Directions and Surveyor-General Guideline No. 6.

[Signature]
for 20/12/2023
Surveyor-General of the ACT Date

LEGEND AND NOTES

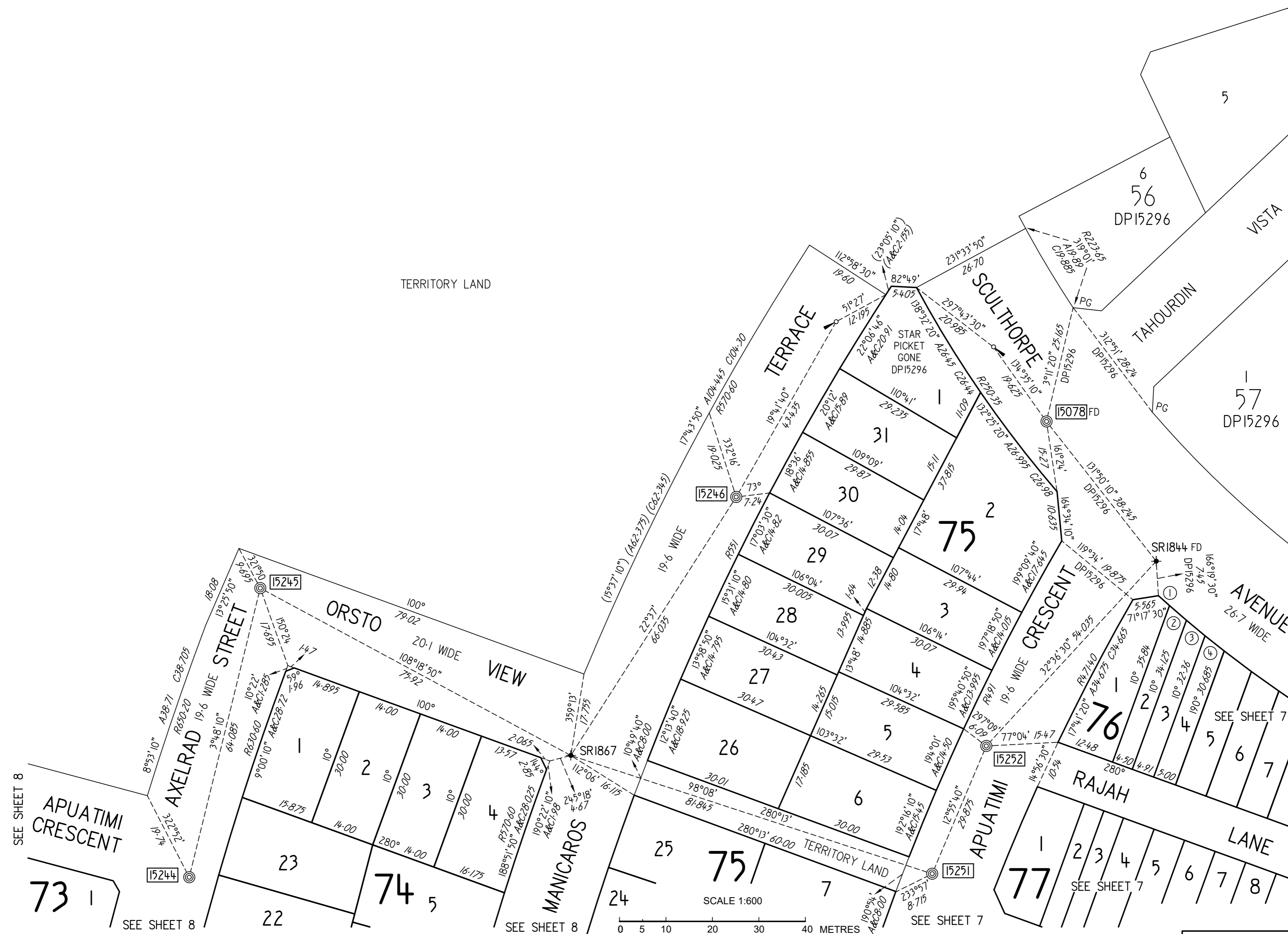
AN EXEMPTION TO COMPLY WITH SPD 15(b) HAS BEEN GRANTED

Orientation Datum Line A - B 87°04'04" SCMR
All Easements are 2.5 metres wide (except as otherwise shown)

PLANS USED
DP15296, DP15836 & DP15914

SHORT LINE TABLE				
LINE	BEARING	DISTANCE	ARC	RADIUS
1	121°48' 10"	3.19	3.19	250.35
2	120°53' 10"	4.815	4.815	250.35
3	119°44' 20"	5.215	5.215	250.35
4	118°32' 20"	5.275	5.275	250.35

STROMLO



SEE SHEET 8

APUATIMI
CRESCENT

73

SEE SHEET 8

22

74

SEE SHEET 8

24

75

SCALE 1:600

0 5 10 20 30 40 METRES

SEE SHEET 7

APUATIMI

77

SEE SHEET 7

76

SEE SHEET 7

7

6

5

4

3

2

1

SR1844 FD

DP15296

75

3

2

1

STAR
PICKET
GONE
DP15296

1

6

56

DP15296

5

VISTA

TAHOURDIN

SCULTHORE

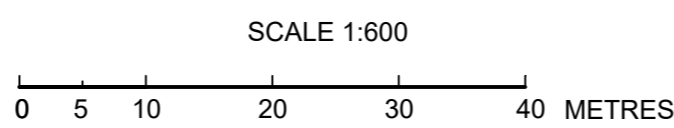
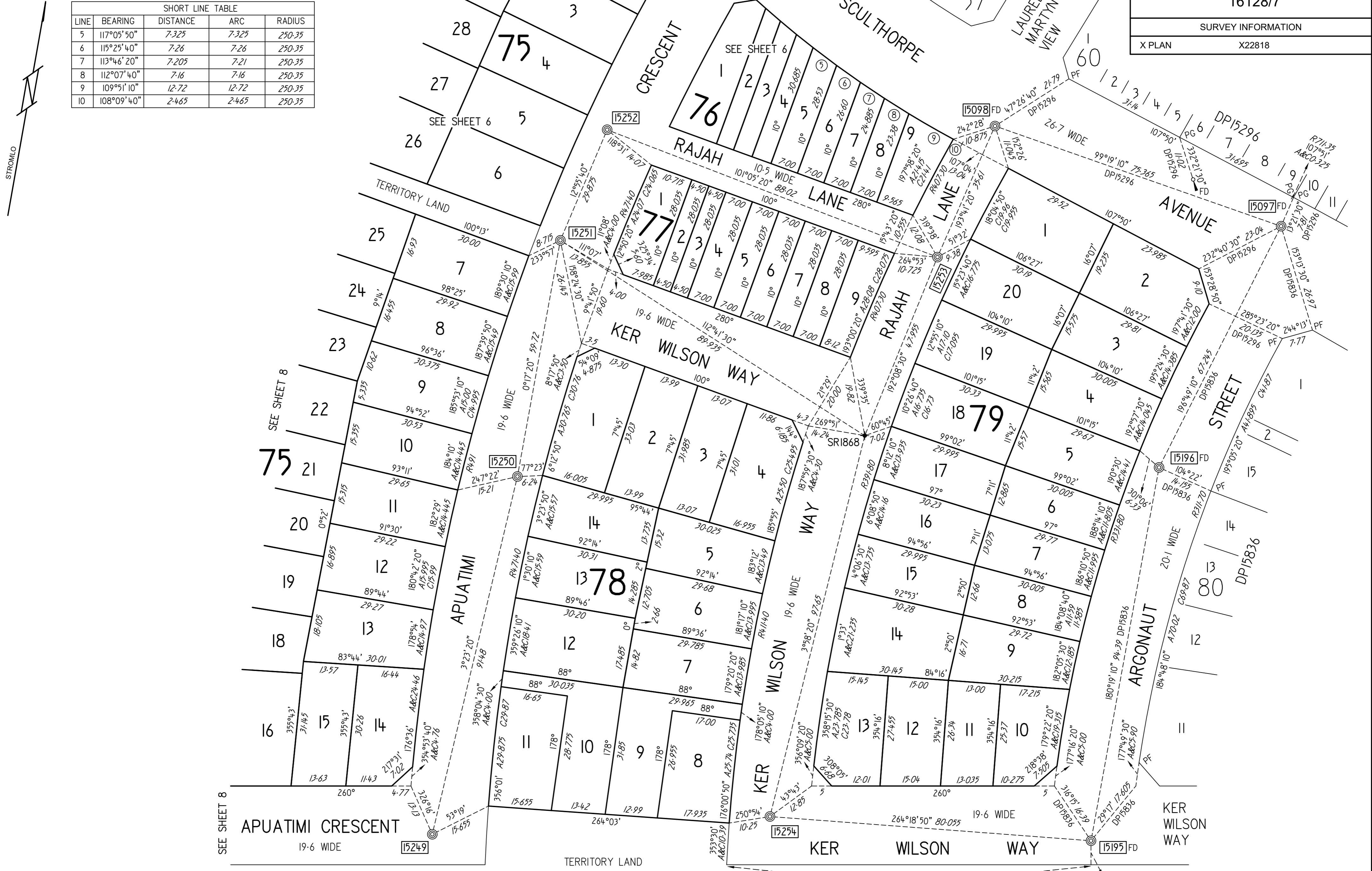
TERRACE

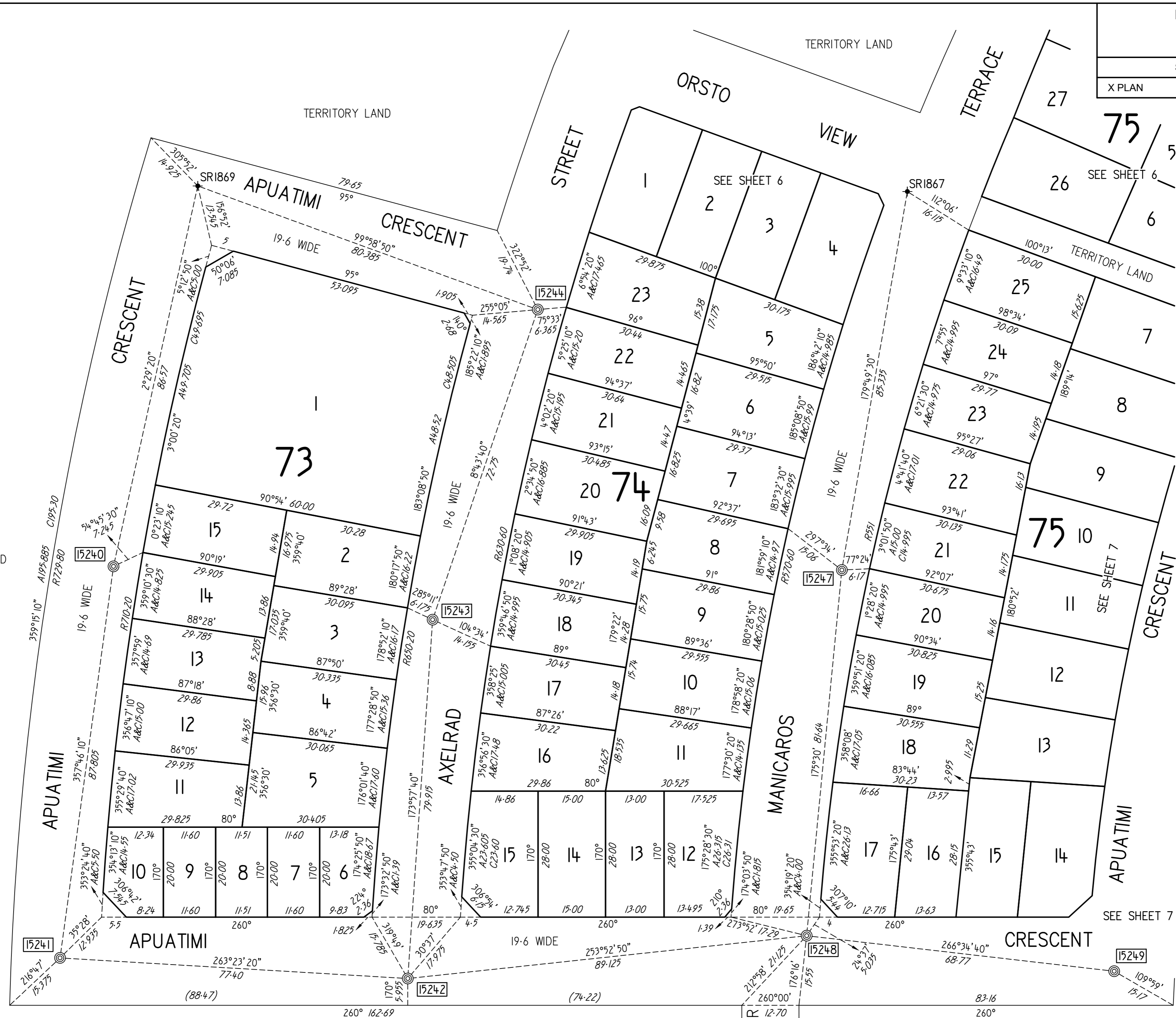
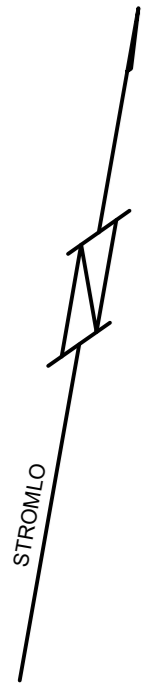
ORSTO

AXELRAD

MANICAROS

LINE	BEARING	DISTANCE	ARC	RADIUS
5	117°05'50"	7.325	7.325	250.35
6	115°25'40"	7.26	7.26	250.35
7	113°46'20"	7.205	7.21	250.35
8	112°07'40"	7.16	7.16	250.35
9	109°51'10"	12.72	12.72	250.35
10	108°09'40"	2.465	2.465	250.35





TERRITORY LAND

TERRITORY LAND

TERRITORY LAND

