

G.J. Gardner. **HOMES**

G.J. Gardner Homes have built 36,000 homes over 37 years based on a single premise – ensure every customer would refer them to their closest friend.

Skyy Skinner-Wade – 0411 323 714
T - 02 6152 9290

34 Ker Wilson Way, Whitlam
 Section 79, Block 16

\$1,200,000



- PRIVATE, PRIMARY BEDROOM WITH ENSUITE, POSITIONED AWAY FROM THE OTHER BEDROOMS AND FAMILY BATHROOM
- OPEN-PLAN KITCHEN WITH BREAKFAST BAR AND WALK-IN PANTRY
- SPACIOUS LIVING AND DINING AREA
- REAR COVERED ALFRESCO IDEAL FOR ENTERTAINING

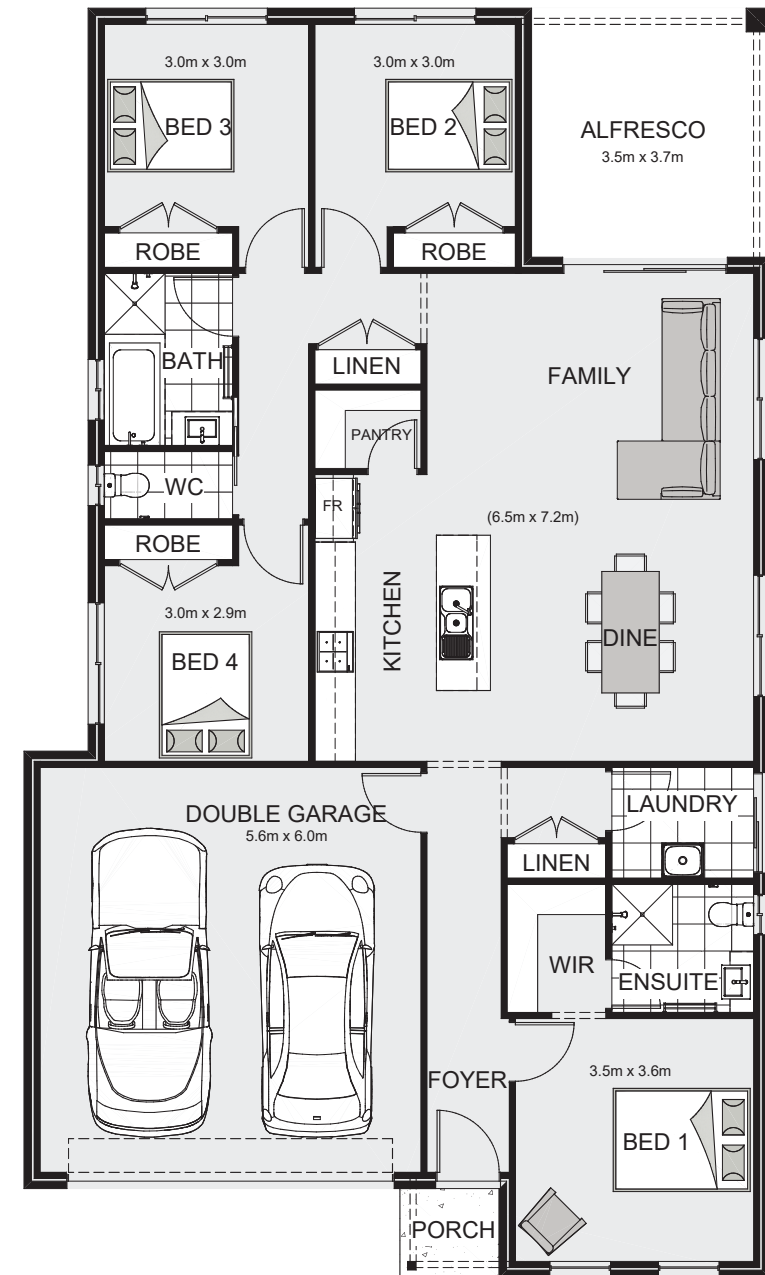


 4
  2
  2.5
  EER 7.0
  190m²
 410m²



Suburban Land Agency

Scan the QR code for more details



The house and land packages advertised in this document are owned and managed by the builder specified. The Suburban Land Agency (SLA) provides no warranty on the accuracy or completeness of the information in this publication. SLA recommends seeking independent legal, financial, and accounting advice before purchasing or making an offer on this House and Land package. The plans, examples, and information provided are for illustrative purposes only and should not be relied upon for ultimate accuracy. To the extent permitted by law, SLA is not liable for any loss or damage resulting from reliance on these materials.